

RIKEI CORPORATION

Company Guide 2023/2024

**Making Your Ideals Reality,
Turning Our Experience into Strength.**

| Corporate Philosophy

Rikei Corporation will contribute to society through the enhancement of the quality, speed, and volume of business activities as well as through the pursuit of technological innovation.

Basic Policies of Corporate Management

Rikei Corporation strives to contribute to the development of a highly information-oriented society by supplying solutions meeting the needs of our customers with ideas and advanced technologies well ahead of expected social changes.

| Message from the CEO

Our mission is to find the most cutting-edge products and system from around the world and provide the optimal solutions to meet customer needs through our three core businesses “System Solutions,” “Network Solutions,” and “Electronic Components and Instruments” that we have, since our foundation, built up on the basis of strong ties with various IT and electronics companies, making steady effort with our proprietary route.

In the digital network era, where digital technology is evolving and the industrial structure is undergoing major changes, we aim to be a “partner that makes dreams come true” that realize optimal solutions for our customers' needs by strengthening and stabilizing our three core business foundations as well as aggressively challenging new business domains such as AI, IoT, and VR/AR.

In addition, we will make a social contribution by promoting sustainability measures proactively as our corporate efforts, with endeavors to achieve carbon neutrality, and by proposing solutions regarding the SDGs (Sustainable Development Goals to 2030).

We respectfully ask for your continued support.



President & CEO

Satoru Asaka

Company Profile

Established	June 8, 1957
Capital	¥3,426 million (As of the end of March, 2023)
End of Fiscal Year	March
Non-Consolidated Sales	¥6,350 million (As of the end of March, 2023)
Consolidated Sales	¥10,285 million (As of the end of March, 2023)
Non-Consolidated Employees	131 (As of the end of March, 2023)
Consolidated Employees	167 (As of the end of March, 2023)
Bank References	MUFG Bank (Shinjuku-Shintoshin Branch) Mizuho Bank (Shinjuku-Nishiguchi Branch) Sumitomo Mitsui Banking (Shinjuku-Nishiguchi Branch) Resona Bank (Shintoshin Banking Department) Mitsubishi UFJ Trust and Banking (Head Office)

Executive Officers (June 29, 2023)	President & CEO	Satoru Isaka
	Managing Director	Naoki Furuhata
	Director	Koji Furuta
	Director	Shoji Hasegawa
	Director	Makoto Koyanagi
	Director	Hiroaki Koganemaru
	Director	Shinji Yokoyama
	Outside Director	Yusuke Date
	Outside Director	Akihisa Takizawa
	Outside Director	Junko Koshino
	Fulltime Statutory Auditor	Shin-ichiro Ishibashi
	Outside Statutory Auditor	Soichiro Akimoto
	Outside Statutory Auditor	Shintaro Furuya

Headquarters

Shinjuku Mitsui Building No. 2, 3-2-11
Nishi-Shinjuku, Shinjuku-ku, Tokyo 160-0023
TEL.+81-3-3345-2150 FAX.+81-3-3345-2168

Osaka Branch

JIN·ORIX Building, 1-7-20
Nishi-Tenma, Kita-ku, Osaka 530-0047
TEL.+81-6-6130-8777 FAX.+81-6-6130-8820

Nihonbashi Sales Office

Koamicho General BLDG. 18-3,
Nihonbashi Koamicho, Chuo-ku, Tokyo 103-0016
TEL.Same as the Headquarters.

Chitose - Eniwa Sales Office

MY Eniwa Building, 56-1
Kyomachi, Eniwa-shi, Hokkaido 061-1444
TEL.+81-123-25-5690 FAX.+81-123-25-5691

Tohoku Sales Office

Sento-Kaikan Building, 2-2-10 Chuo, Aoba-ku,
Sendai, Miyagi 980-0021
TEL.+81-22-208-9559

Nagoya Sales Office

No.11 KT Building, 3-17-4
Marunouchi, Naka-ku, Nagoya, Aichi 460-0002
TEL.+81-52-962-3710

Kyushu Sales Office

DaiHakata Building, 2-20-1
Hakataekimae, Hakata-ku, Fukuoka 812-0011
TEL.+81-92-411-8731 FAX.+81-92-411-8744

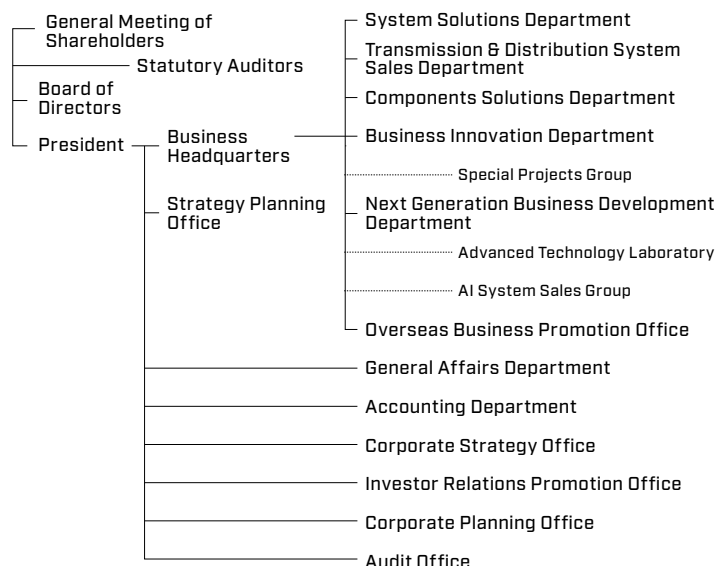
Technical & Engineering Center

Makuhari Techno Garden, B Tower, 1-3
Nakase, Mihama-ku, Chiba 261-8501
TEL.+81-43-274-8431 FAX.+81-43-274-8439

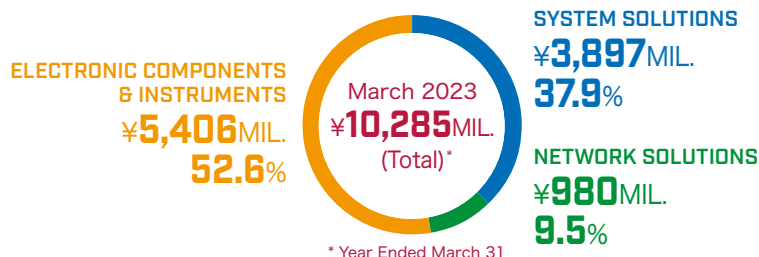
Okinawa Office

Tomari Port Building, 3-25-2
Maejima, Naha, Okinawa, 900-0016
TEL.+81-98-943-2378

Organization Chart (As of April 1, 2023)



Consolidated Sales by Department and Composition Ratio



Subsidiaries

AeroPartners Incorporated

Established	July 1992
Capital	¥80 Million
Executive Officers	President : Makoto Koyanagi Director : Tamami Nakahara Director : Shinji Yokoyama Statutory Auditor : Shoji Hasegawa
Address	Shinjuku Mitsui Building No. 2, 3-2-11 Nishi-Shinjuku, Shinjuku-ku, Tokyo 160-0023 TEL +81-3-3340-6101 FAX +81-3-3340-6105 URL http://www.aeropartners.co.jp/en/index.html
Field of Business	Sale and leasing of aircraft and aircraft parts and customer support

NetWell System Corporation

Established	September 2008
Capital	¥15 Million
Executive Officers	President & CEO : Akimi Tomita Director : Koji Furuta Director : Yukihito Yamagishi
Address	Shinjuku Mitsui Building No. 2, 3-2-11 Nishi-Shinjuku, Shinjuku-ku, Tokyo 160-0023 TEL +81-3-3345-2180 FAX +81-3-3345-2172
Field of Business	System development

[Note] RIKEI CORPORATION (H.K.) LIMITED was closed down as of the end of March 2023, and the liquidation is scheduled to be completed in November 2023.

SYSTEM SOLUTIONS

Providing solutions including information security, IT infrastructure, CAD, and new business fields such as AI, IoT, VR/AR, etc. to private companies, universities, government offices, and research institutions as a total system that meets needs of customers.

Flexible and agile IT infrastructure



HPE (Hewlett Packard Enterprise) Solutions

An extensive lineup of HPE products is available to support all kinds of workloads. We also offer a wide scope of solutions, such as a hyper-converged virtual infrastructure, Aruba network suitable for performance and security measures and IoT systems.



HP's personal computing and printing that create new values



HP Japan Products

Offering PCs for corporations installed with comprehensive and unique security solutions developed through advanced research & development, and printing solutions with industry-leading advanced technologies.



Centralize the operation and management of academic affairs at educational institutions



Entrance Exam/Curriculum System "CampusMagic"

"CampusMagic" is an intuitive and easy-to-operate system that helps educational institutions manage entrance examinations, academic affairs, employment, and attendance. With this system, data such as student attendance, courses, and test scores can be centrally managed at low cost. Equipped with a score analysis tool and web portal function as standard, the system meets a wide range of needs of educational institutions.

Secure file sharing



Secure File Collaboration System "Accellion Kitemworks"

It provides on-premise solutions that allow secure sharing of large files and folders with external users.

Accelerate AI development with the use of VR spaces



VR for vehicle/drone AI development

A high-resolution VR space is provided to facilitate AI learning for self-driving cars and autonomous flight drones. This allows specific situations to be recreated anytime and anywhere by linking with real city data.



PHR Healthcare Products Using Transcutaneous Optical Technology



Contactless Vital Measurement Solution

Providing contactless vital measurement solution that measure vital parameters such as heart rate and analyze them using AI.

*PHR : Personal Health Record

Total offering of IBM solutions



IBM Solutions

Products supporting IT infrastructure are provided primarily through software. LTO tape systems for video footage libraries used by broadcast stations are also offered.

OpenVMS can run on Intel x86 architecture



"OpenVMS"

"OpenVMS", which used to run on CPU such as DEC's "VAX", now can be run on CPU with x86 architecture. Existing "OpenVMS" programming assets are available on new platforms.

Industry standard software for power system analysis adopted in more than 80 countries



"PSCAD V5", software for Electromagnetic Transient simulations in power systems

The software performs time domain-based power system simulations with an excellent GUI for analyzing various issues in power systems. It can build a graphical simulation model of power systems, run analyses, and output highly accurate results. A wide variety of components are included as standard, and users can make customized components.



Expandability and excellent operability



3D CAD "Creo", product life cycle management "PTC Windchill", AR platform "Vuforia Studio"

"Creo" is an integrated offering of 3D CAD, CAM, and CAE solutions that feature all the product development processes, ranging from design to the analysis of mechanisms, heat, conduction, and stress. We also provide "Windchill" solution, which offers capabilities for helping to manage enterprise data, bills of materials (BOMs), documents, workflows, changes and collaborations. Integrated with "Vuforia Studio", an augmented reality (AR) platform, "Creo" enables you within just a few clicks to create and publish a direct AR experience.



Two-factor authentication, visual inspection, and facial recognition products using AI technology



AI Products

Providing contracted development of packaged and custom software using AI engines from Mindhive and ax, as well as face recognition engines from GLORY. As for AI, providing technology services in various fields such as visual inspection by image analysis, face recognition, and remote monitoring linked with IoT.



Gesture authentication



NETWORK SOLUTIONS

Providing cutting-edge solutions with the keywords of information transmission and distribution to customers such as broadcasting, telecommunications, and local governments.

Realizing digital transformation



Aruba Network Solution

HPE's "Aruba" provides an enterprise network for realization of digital transformation and secure, stable, and comfortable Wi-Fi environments to the industry's highest level, and utilizes added value features such as authentication and positional information to provide flexible solutions tailored to the scale of installation. The "Aruba Remote Access Point (RAP)" is also available for users working from home or remote offices.



From wireless solutions to the enhancement of disaster prevention adapted to the scale of deployment



Long-distance wireless access device

RADWIN's "RADWIN 2000 Alpha", "RADWIN JET-DUO", "RADWIN 5000L", and "FiberinMotion" series are 4.9GHz outdoor long-distance wireless LANs for 1:1 and 1:N. They can connect remote areas up to 40 km apart via wireless LAN. The series can also be used while moving and is offered as a material transmission system for broadcasting and cable TV stations, a disaster prevention information system for municipalities, and a wireless facility for transportation infrastructure.



Siklu's "EtherHaul™-800TX" and "MultiHaul™ TG" series are license-free, high-speed wireless LANs with up to 3.8Gbps throughput. It can transmit large capacity up to 1 km as trunk line for Internet service. In addition, "EtherHaul™-8010" series, millimeter-wave radios requiring a license provide up to 5km/10Gbps transmission.



Providing the best IoT wireless infrastructure for video, sensor information, etc.



IoT Wireless Infrastructure

Constructing a system for remote monitoring of rivers and dams outside communication service areas using multiple wireless devices (two-way communication for still images and videos). Network construction using sXGP and local 5G/private LTE base stations (including EPC servers) is also possible.

Simulating Various Network Constructions by Reproducing Cases in Internet Connection



Network Emulators, Traffic Generators

Providing network emulators that enable to simulate network environments including terrestrial, wireless, and satellite networks by reproducing bandwidth, latency, and packet loss etc. On IP networks, as well as traffic generators that enable to generate network and application traffic supporting various protocols. Performance bottlenecks and failure points can be identified before the network goes into operation.



Network Infrastructure for Hotels



Internet Access Gateway, Screencasting and Wi-Fi Networking Products

We provide Nomadix's "Internet Access Gateway" that enables to connect to the Internet at hotels without changing PC settings, featuring billing, authentication, bandwidth control, and URL redirection, in addition to "Nomadix Casting" that can watch video on hotel TVs by screencasting smartphone in seconds, short-delivery-time network switches, and wireless Wi-Fi.



Reliable technical support



Sales and technical support, Support for system design, introduction and operation

Our field support engineers provide system design, and proposal, shipping inspection of equipment and software, system construction, installation, and maintenance, as well as procurement, sales, and maintenance for equipment related to the National Instant Warning System (J-Alert).



Technical & Engineering Center

All business

Rikei, a Company Supporting the



Offices



Education



Public offices/
Local
governments



Manufacturing



Automobile

Supporting All-IP broadcasting and low-latency delivery mechanism using the latest technology

Digital Video Transmission and Distribution Systems

To meet the high-end video and audio processing needs of media companies such as broadcasting stations, cable TV stations, and paid streaming providers, we provide total systems from codec equipment compatible with the latest standards to viewing players, quality monitoring, and optimization. In addition to conventional equipment installed in facilities, we also offer a wide range of services, including software configured on the cloud and pay-as-you-go service provision. We support a wide variety of video distribution from end to end, from providing only products to supporting system construction that transcends the boundaries of manufacturers.



Supporting Improvement of Quality and Cost-Saving of Video Delivery

Optimization Services for Digital Video Distribution

SSIMWAVE Inc. visualizes viewer satisfaction which has been difficult to grasp so far, by scoring the viewing experience of Internet video delivery on a 0-100 scale using SSIM Plus®. In addition, it is possible to check the correlation between distribution settings and distribution quality objectively, supporting the optimization of settings required for video distribution and cost reduction while maintaining the quality of the viewing experience.

Providing total support for satellite communications

Satellite Communications Products

Providing satellite communications products from western countries including satellite modems, frequency converters, power amplifiers, and various antennas, as well as service to select equipment and designing and building a system according to user's application. Also, building and providing device for mounting on satellite, modules, and X/Y tracking antennas for communications in the field of low earth orbit satellites that are getting attention as a new space business.



Comtech ELEVATE

Cloud video streaming service for various demands across industries

Cloud Video Streaming Service

A video streaming service based on the SaaS model that can be started anytime, easily, and immediately. Providing services ranging from knowledge sharing for internal training and sales materials to paid video distribution services, regardless of industry, size, or whether it is live or on-demand. Realizing one-stop solution for video delivery issues not only by offering video distribution processing but also proposals for transmission, delivery networks, and portal sites including customizable players.

Helping local governments distribute disaster prevention information

Disaster Prevention Information Distribution Systems

We have participated in the "J-alert" (nationwide simultaneous warning system) project from its design and field demonstration test phases and are currently carrying out development, manufacturing, sales, and maintenance of "J-Alert receivers".

We also offer a comprehensive disaster prevention information distribution system for local governments, which realizes diversification of transmission methods to citizens by combining the wireless communications with software development.

This system removes the burden of parallel operations of multiple systems and allows quick delivery of the alerts distributed via J-Alert to various transmission methods such as SNS linkage and CMS (WEB) linkage.

The system was employed for "Field demonstration tests on multi-transmission methods for disaster prevention information (in Koto Ward)," which was conducted through cooperation with the Fire and Disaster Management Agency (FDMA) of the Ministry of Internal Affairs and Communications, and by Tomigusuku City, Okinawa, etc. In addition to J-Alert distribution, it is providing evacuation guidance and voice transmission to evacuees by establishing wireless connections among outdoor speakers, and digital signages and Wi-Fi spot services by extending wireless networks to elementary schools, which will act as evacuation centers, and evacuation routes.



Business types

Society and Creating the Future



Electric power



National security



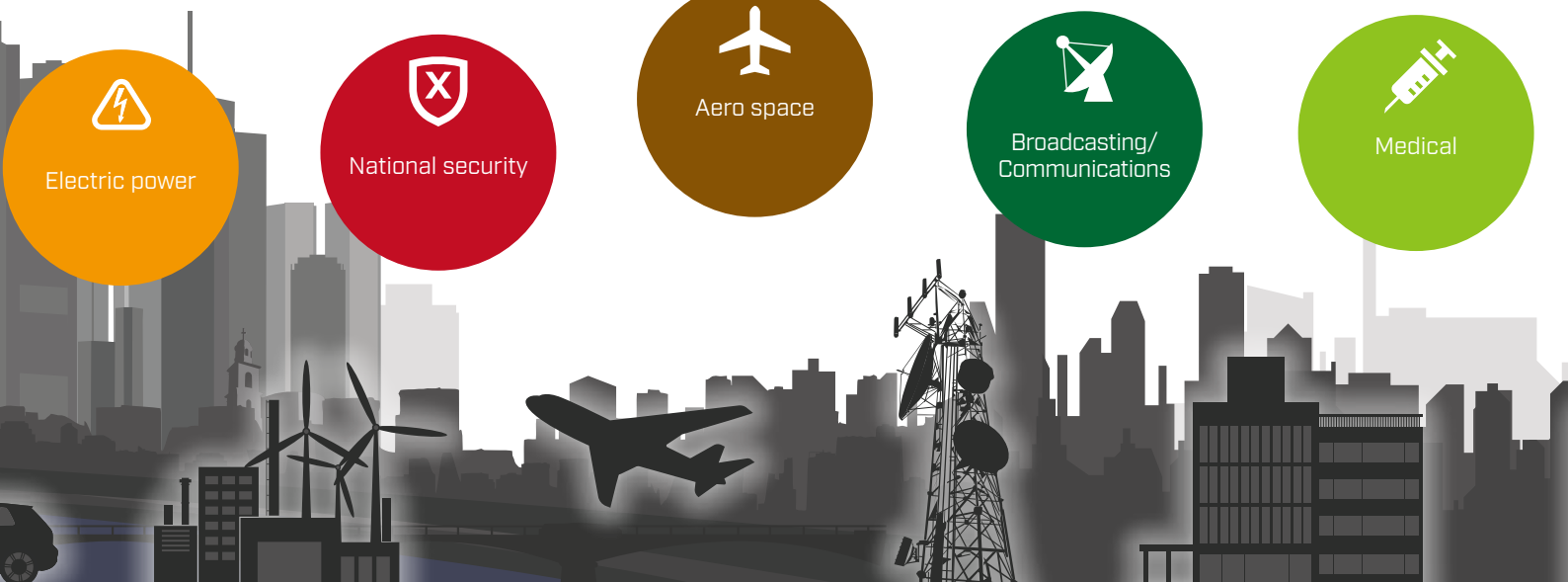
Aero space



Broadcasting/
Communications



Medical



ELECTRONIC COMPONENTS & INSTRUMENTS

Providing a wide range of electronic components, instruments, and electronic materials in a variety of fields, from industrial equipment to automobile, medical, optical communication, optical feeding, and national security. Our highly expertized products enable us to make optimal proposals matching the purpose of use.

Power Supplies Requiring High Reliability

Power Supplies

Offering PULS' high-efficiency switched-mode DIN-rail power supplies, RECOM's high-efficiency DC/DC and AC/DC converters and switching regulators.



High performance electronic components essential for the industrial equipment field

Electronic Components

We provide LED chips for high-resolution sensor applications, highly reliable resistive and capacitive touch panels for industrial equipment, LDC panel modules, character OLED modules, motherboards, industrial PCs, chip resistors, chip capacitors and ceramic packages.



Emitters and Photodetectors with a Full Lineup of Products from UV to Near-Infrared

Emitters, Photodetectors

Preparing lots of emitters and photodetectors for different applications. We can design packages including integration of emitter and photodetector, as well as propose optical power supply system according to users' purposes.

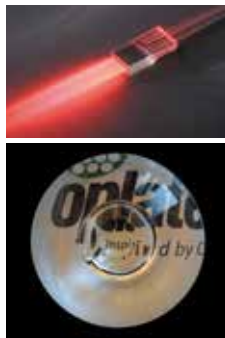


Proposing One-Stop Service from Design to Development of Custom Fibers and Optical Devices.

Optical Fibers, Optical Fiber related Products

We can make proposals for the development and manufacturing of custom fibers, including single-mode fibers and multi-mode fibers from Photonic Science Technology, and also offer assembly services including fiber termination processing, arraying, bundling, and high-powered connectors.

In addition, we develop prototypes and produce small lots of optical fibers, design and install drawing equipment, and analysis fiber simulation in cooperation with universities. Full-scale mass production of coated fibers by Oplatek Group in Finland, and optical design of systems including optical lenses and thin-film coatings are also available.



Industrial PCs for Manufacturing/Medical Equipment, and Vehicle Installation

Electronic Devices

Providing PCs for industrial equipment with enhanced robustness and heat dissipation measures for factory automation, medical system equipment, and transportation systems.



Industrial measuring instruments that provide for quick and low-cost development

Measurement & Analysis Solution

We provide NI's data recording related products that make it possible to record data on a PC basis, and GPIB related products that serve as measuring equipment control interfaces. In addition, we also provide module-type RF measuring products which are useful for designing and testing wireless devices. The use of software products such as the industry standard "LabVIEW" also help to drastically reduce the amount of time needed for development.



IoT module, which has been used in many heavy machineries, enables satellite communication

Quake Global's IoT/M2M terrestrial and satellite-compatible module

With 3G/LTE communications certified as compliant with domestic Japanese carrier technical standards and IoT communications modules that support satellite communications, we provide connectivity from locations outside terrestrial signal coverage. The IoT communications module has been adopted by 13 of the world's top 20 heavy equipment manufacturers and can collect data from anywhere in the world.



Trusted electronic materials with proven performance

Electronic Materials

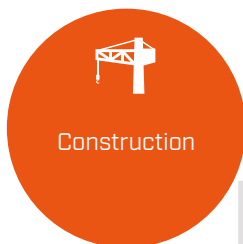
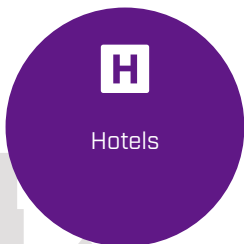
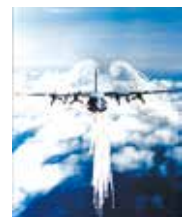
Epoxy Technology has built an impressive track record spanning decades in the field of optical communications. It has developed hybrid adhesives (which are provisionally cured by ultraviolet rays and permanently cured by heating), that is tailored to customer's processes with the know-how accumulated so far. The company has an extensive record of delivery to not only medical and sensing but also a wide range of fields. It also offers functional materials that meet the needs of customers including ADS Thermal Compounds' non-silicone thermal grease, free of outgassing problems.



Playing an active role at the forefront of national security

Aircraft Related Products/Emergency Rescue Equipment

Providing ECM expendables (chaff/flare), holographic sights, ISO-compliant portable expandable containers, CLT (Container Load Trailer) dollies, free-fall training systems, night visions, a wide variety of drones, TPL (Trapped Person Locator), signaling lights for airtraffic control, and other various security products.



Company History

1957	Rikei Trading Co., Ltd. founded in Shiba-Shimbashi (present Nishi-Shimbashi), Minato-ku, Tokyo
1964	Delivered DEC's mini-computer PDP5 to the University of Tokyo
1968	Osaka Branch opened
1971	Company name changed to Rikei Corporation
1973	Rikei Corporation of America established in Cupertino, California, U.S.A. as a locally incorporated company (Liquidated in April 2014)
1974	Rikei Corporation (H.K.) Limited established in Hong Kong as a locally incorporated company (The liquidation is scheduled to be completed in November 2023) Delivered Scientific Atlanta's satellite tracking system to Showa Station in Antarctic
1978	Head Office moved to Shinjuku Nomura Building in Nishi-Shinjuku, Shinjuku-ku, Tokyo
1979	Delivered the first machine of DEC VAX780 to the National Institute for Basic Biology
1982	Nagoya Sales Office opened
1986	Sendai Sales Office opened (presently Tohoku Sales Office)
1988	Listed on the Second Section of Tokyo Stock Exchange Delivered a 34-m radio telescope to Radio Research Laboratory
1990	Technical & Engineering Center opened in Makuhari Techno Garden, Nakase, Mihama-ku, Chiba
1993	Delivered a digital library system to Nara Institute of Science and Technology
1995	Fukuoka Sales Office opened (presently Kyushu Sales Office)
1997	Delivered a digital broadcasting system to NHK International Broadcasting Station Jointly with Honda Motor Co., Ltd., successfully developed a riding simulator for motor-bicycles
2001	Delivered a satellite-based digital image transmission system to a CATV station Delivered a satellite-based data distribution system to a convenience store chain
2002	Delivered a genome analysis computer system to Kazusa DNA Research Institute Obtained certification of enterprise-wide Environmental Management System (ISO 14001)
2005	Delivered a high-performance computing server to Kyushu University
2007	Delivered J-Alert receivers to 696 local governments
2008	Obtained certification of Information Security Management System (ISO 27001)
2010	Obtained certification of Quality Management System (ISO9001)
2011	Delivered an automatic voice recognition system to National Research Institute of Police Science
2012	Conducted "Field demonstration tests on multi-transmission methods for disaster prevention information" in Koto Ward in Tokyo through cooperation with the Fire and Disaster Management Agency (FDMA).
2013	The North America liaison office established in Bend, Oregon, U.S.A. [Closed in March 2023] Designed and delivered a disaster prevention information management system to City of Tomigusuku, in Okinawa
2014	Delivered a large order of satellite communications antenna systems to a broadcasting satellite company
2015	Okinawa Office opened Delivered a membership management system for smartphones to a major distributor
2016	Designed and delivered a disaster prevention information management system to City of Urasoe, in Okinawa Delivered an university-wide Wi-Fi system and cloud-based groupware for educational institutions to Mukogawa Women's University Started to develop and provide a hands-on VR drill solution
2017	"Field demonstration tests utilizing tethered drones aimed at gathering information under disaster conditions" adopted for the "Promotion Program for Scientific Fire and Disaster Prevention Technologies" founded by the FDMA Acquired shares of AeroPartners Incorporated (Subsidiary acquisition) Acquired shares of NetWell System Corporation (Subsidiary acquisition)
2020	Entered into the business alliance with Ascentek K.K. for the purpose of building foundation for promoting remote work
2021	Head Office moved to Shinjuku Mitsui Building No. 2 in Nishi-Shinjuku, Shinjuku-ku, Tokyo Nihonbashi Sales Office opened Underwrote a third-party allotment of shares of VFR Inc.
2022	Signed on the strategic business alliance agreement with DEC Co. Ltd. Shifted from the Second Section of the Tokyo Stock Exchange to the Standard Market
2023	Chitose-Eniwa Sales Office opened

Principal Business Partners

SYSTEM SOLUTIONS

Amazon Web Services, Inc.	Manitoba Hydro International Ltd.
atlatic Japan K.K.	Mindhive Ltd.
ax Inc.	Nippon RAD Inc.
BeyondTrust Corporation	NuraLogix Corporation
GLDRY LTD.	Oracle Corporation Japan
Hewlett Packard Japan, G.K.	PTC Japan K.K.
HP Japan inc.	VARIANTSOFT Inc.
IBM Japan, Ltd.	Virtual Mechanics Corporation
J's Communication Co., Ltd.	WASAY SOFTWARE TECHNOLOGY INC.
Kiteworks	XLsoft K.K.

NETWORK SOLUTIONS

Advantech Wireless Technologies Inc.	KenCast, Inc.
Amino Communications Ltd.	KRATOS Defense & Security Solutions Inc.
Aposuite Technologies	MediaKind
Aruba networks	Necru Inc.
ATEME SA	Novelsat Ltd.
Communications & Power Industries (CPI)	Nomadix, Inc.
Comtech Satellite Network Technologies Corp. (UHP)	Norsat International Inc.
Comtech Satellite Network Technologies Inc. (EFData, Xicom)	Novra Technologies Inc.
Comtech Space Components and Antennas	PacketLight Networks Ltd.
Cross Technologies, Inc.	Peak Communications Ltd.
ENENSYS Technologies, S.A.	RADWIN Ltd.
Elber S.r.l.	Siklu Communication Ltd.
ETL Systems Ltd.	Silex Technology, Inc.
EVC Inc.	ST Engineering iDirect, Inc.
Fortra, LLC (FileCatalyst)	Synamedia Vividtec Holdings, Inc.
Gilat Satellite Networks Ltd.	Teledyne UK Limited.
Global Invacom Group (Skyware, Foxcom)	TestTree
Havision Systems Inc.	Ubiik, Inc.
IBEX Technology Co., LTD	ViaLite Communications
	Viking Satcom
	XMW Inc.

ELECTRONIC COMPONENTS & INSTRUMENTS

ADS Thermal Compounds LLC	Micro-Tronics
Armtec Defense Products Co. (TransDigm group)	Microwave Dynamics, Inc.
ATI Avionics Inc.	Mid-Atlantic RF Systems, Inc.
BodyFlying AG	Mini-Systems, Inc.
Canadian Technology Systems (CTS)	MTI-MILLIREN TECHNOLOGIES, INC.
CDK Mobile Systems Inc.	Muromachi Chemicals Inc.
Daido Steel Co., Ltd.	National Instruments Japan Corporation
DMC Co., Ltd.	Qplatek Group Oy
ELPAM Electronics Ltd.	Photonic Science Technology Inc.
Emerging Display Technologies Corp.	PULS GmbH
Ensign Power Systems, Inc.	PYSER-SGI Ltd.
EQTech Inc.	Quake Global Inc.
Epoxy Technology, Inc.	QUEST Microwave Inc.
General Incorporated Association TACMEDA	RECOM Asia Pte. Ltd.
Inert Products LLC	SPACE LABS, INC.
Knowles Electronics, LLC.	StratEdge Corporation
Marktech Optoelectronics Corporation	Wainwright Instruments GmbH
Micro-Star INT'L CO., LTD. (IPC)	Weatherhaven Global Resources Ltd.