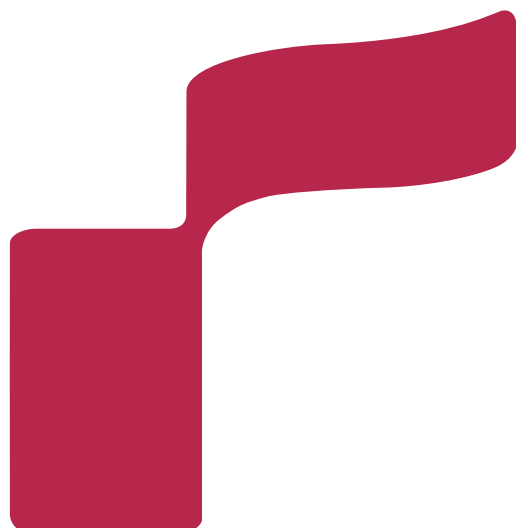


# Company Guide

2026 / 2027 

---

 **RIKEI CORPORATION**



## Corporate Philosophy

Rikei Corporation will contribute to society through the enhancement of the quality, speed, and volume of business activities as well as through the pursuit of technological innovation.

### Basic Policies of Corporate Management

Rikei Corporation strives to contribute to the development of a highly information-oriented society by supplying solutions meeting the needs of our customers with ideas and advanced technologies well ahead of expected social changes.

Our basic management policies are to contribute to the creation of an enriched society by enhancing our corporate value and enjoying our prosperity together with our shareholders, customers, and employees by way of complying with laws and regulations, making effective use of our management resources, and improving profitability and to proactively promote global environmental conservation activities.

## Message from the CEO

The mission of the Rikei Group is to identify cutting-edge products and systems from around the world and provide optimal solutions to our customers through our three core businesses, System Solutions, Network Solutions, and Electronic Components & Instruments. Since our founding, we have steadily strengthened these businesses through long-standing relationships with a wide range of partners and customers.

In today's era of rapidly advancing digital technology, where AI and the digital transformation are reshaping industries and improving operational efficiency, we remain committed to strengthening our core businesses while actively exploring new business areas to create new value.

In addition, the Group has established and properly manages its sustainability strategy in order to achieve sustainable growth and fulfill its social responsibilities. Based on this strategy, we are also addressing various issues across the three ESG areas through our business activities.

We sincerely appreciate your continued support.



A handwritten signature in black ink, appearing to read 'M. Jo'.

President & CEO

## Company Profile (as of March 31, 2026)

Established	June 8, 1957
Capital	JPY 3,426 million
End of Fiscal Year	March
Sales	Non-Consolidated JPY 6,419 million
	Consolidated JPY 19,535 million
Employees	Non-Consolidated 137
	Consolidated 179
Main Financing Banks	MUFG Bank (Shinjuku-Shintoshin Branch) Mizuho Bank (Shinjuku-Nishiguchi Branch) Sumitomo Mitsui Banking (Shinjuku-Nishiguchi Branch) Resona Bank (Shintoshin Banking Department) Mitsubishi UFJ Trust and Banking (Head Office)

Executive Officers (as of June 26, 2026)	President & CEO	Makoto Koyanagi
	Managing Director	Naoki Furuhashi
	Director	Koji Furuta
	Director	Shoji Hasegawa
	Senior Executive Officer	Hiroaki Koganemaru
	Senior Executive Officer	Shinji Yokoyama
	Outside Director	Yusuke Date
	Outside Director	Akihisa Takizawa
	Outside Director	Junko Koshino
	Fulltime Statutory Auditor	Yukihito Yamagishi
Outside Statutory Auditor	Shintaro Furuya	
Outside Statutory Auditor	Mizue Sato	

### Headquarters

Shinjuku Mitsui Building No. 2, 3-2-11  
Nishi-Shinjuku, Shinjuku-ku, Tokyo 160-0023  
TEL.+81-3-3345-2150 FAX.+81-3-3345-2168

### Osaka Branch

INTER ONE TOWER, 1-7-20  
Nishi-Tenma, Kita-ku, Osaka 530-0047  
TEL.+81-6-6130-8777 FAX.+81-6-6130-8820

### Chitose - Eniwa Sales Office

MY Eniwa Building, 56-1  
Kyomachi, Eniwa-shi, Hokkaido 061-1444  
TEL.+81-123-25-5690 FAX.+81-123-25-5691

### Tohoku Sales Office

KURAX SENDAI, 3-3-1 Ichibancho, Aoba-ku,  
Sendai-shi, Miyagi 980-0811  
TEL.+81-22-209-5019

### Nagoya Sales Office

No.11 KT Building, 3-17-4  
Marunouchi, Naka-ku, Nagoya, Aichi 460-0002  
TEL.+81-52-962-3710

### Kyushu Sales Office

DaiHakata Building, 2-20-1  
Hakataekimae, Hakata-ku, Fukuoka 812-0011  
TEL.+81-92-411-8731 FAX.+81-92-411-8744

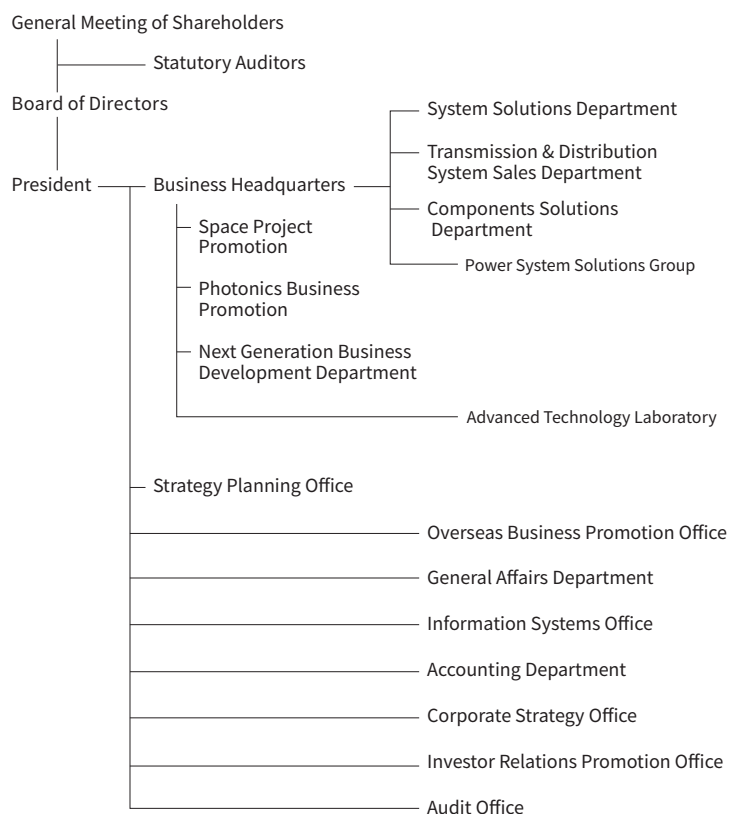
### Technical & Engineering Center

Makuhari Techno Garden, B Tower, 1-3  
Nakase, Mihama-ku, Chiba 261-8501  
TEL.+81-43-274-8431 FAX.+81-43-274-8439

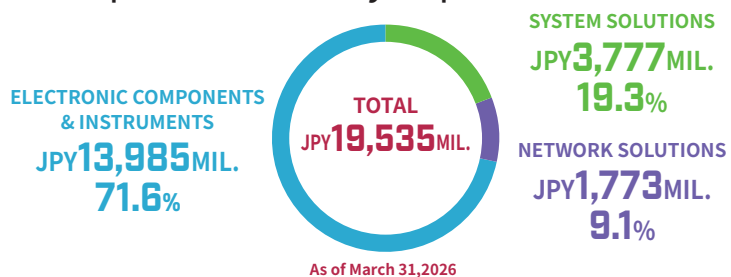
### Okinawa Office

Tomari Port Building, 3-25-2  
Maejima, Naha, Okinawa, 900-0016  
TEL.+81-98-943-2378

## Organization Structure (as of April 1, 2026)



## Consolidated Sales and Composition Ratio by Department



## Subsidiaries

### AeroPartners Incorporated

Established	July 1992
Capital	JPY 80 million
Executive Officers	President Ryoichi Shimamura Director Shinji Yokoyama Director Tamami Nakahara Director Shoji Hasegawa Statutory Auditor Takeo Kikuchi
Address	Shinjuku Mitsui Building No. 2, 3-2-11 Nishi-Shinjuku, Shinjuku-ku, Tokyo 160-0023 TEL +81-3-3340-6101 FAX +81-3-3340-6105 URL <a href="https://www.aeropartners.co.jp/en/">https://www.aeropartners.co.jp/en/</a>
Field of Business	Sale and leasing of aircraft and aircraft parts and customer support

### NetWell System Corporation

Established	September 2008
Capital	JPY 15 million
Executive Officers	President & CEO Akimi Tomita Director Koji Furuta Director Takeo Kikuchi
Address	Shinjuku Mitsui Building No. 2, 3-2-11 Nishi-Shinjuku, Shinjuku-ku, Tokyo 160-0023 TEL +81-3-3345-2180 FAX +81-3-3345-2172
Field of Business	System development

# SYSTEM SOLUTIONS

Providing solutions with IT infrastructure, including information security, CAD, and solutions in new fields of business such as AI, IoT, and VR/AR, to private companies, universities, government offices, and research institutions as comprehensive systems that meet the needs of customers.

## Flexible and agile IT infrastructure



### Hewlett Packard Enterprise (HPE) Solutions

An extensive lineup of HPE products is available to support any type of workload. We also offer a wide scope of solutions, including hyper-converged virtual infrastructure, high performance Aruba networks suitable for the implementation of security measures and IoT systems.



## HP's personal computing and printing solutions that create new value



### HP Japan Products

The provision of PCs for corporations installed with comprehensive and unique security solutions developed through advanced research and development efforts, and printing solutions leveraging advanced industry-leading technologies.



## Centralized implementation and management of the operations of educational institutions



### "CampusMagic" Entrance Exam and Curriculum System

"CampusMagic" is an intuitive and easy-to-operate system that helps educational institutions manage entrance examinations, employment, attendance and other operations. Using this system, data such as student attendance, courses, and test scores can be centrally managed at low cost. The standard system comes equipped with a score analysis tool and web portal feature and it fulfills a wide range of needs of educational institutions.

## Enhancing security and control for confidential data sharing



### "Kiteworks" Secure File Collaboration System

"Kiteworks" provides on-premises solutions that enable confidential data to be securely shared with external users.

## Supporting Design, Verification, and AI Development with Digital Twin Technology



### Digital Twin Solutions for Manufacturing Industries

Supporting development using NVIDIA Omniverse™ and Unreal Engine. Leveraging high-fidelity digital twin environments, the solution enables a wide range of manufacturing applications, including design evaluation, robot simulation, and AI training.



## Easy Wellness Monitoring Services & SDKs for PCs and Smartphones



### Non-contact Vital Sign Measurement Solution

Featuring NuraLogix's SDK and "DoHiSe," a health monitoring service powered by NuraLogix's measurement technology. The solution supports a wide range of applications, including health and wellness events, sports competitions, and corporate wellness programs.

## Comprehensive provision of IBM solutions



### IBM Solutions

Products supporting IT infrastructure are provided primarily through software. LTO tape systems for the video libraries used by broadcast stations are also provided.

## Made in Japan IDaaS



### "Extic" Cloud Authentication Solution

"Extic" is a made in Japan cloud ID management platform that enables ID federation both in the cloud and on premises, featuring single sign-on and federated authentication using GakuNin.\*

\*GakuNin: The Academic Access Management Federation in Japan. Its members include universities, educational institutions, publishers, etc. that use and provide academic resources electronically.



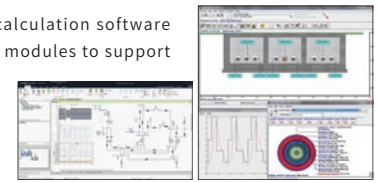
## Globally recognized simulation software for the analysis, design, and verification of power systems and equipment



### "PSCAD V5" Software for Power Systems EMT Simulations, "CYMCAP" Software for Calculating Cable Ampacity

"PSCAD V5" is an EMT-based power system analysis software designed to study a wide range of electrical phenomena in power systems. In addition to its simulation and analysis capabilities, Rikei also provides custom model development and analysis services.

"CYMCAP" is a cable ampacity calculation software featuring an extensive lineup of modules to support electrical facility design.



PSCAD V5

CYMCAP

## Expandability and excellent operability



### "Creo" 3D CAD Software / "PTC Windchill" Product Lifecycle Management (PLM)

"Creo" is a comprehensive 3D CAD/CAM/CAE solution that supports product design, mechanism analysis, thermal analysis, and structural stress analysis throughout the product development process.

"Windchill" is a PLM solution for centrally managing product lifecycle processes, product information, and business workflows. It supports the management of CAD data, BOMs, documents, workflows, engineering changes, and collaboration using data created with "Creo."

By integrating "Creo" with "Windchill," product and service-related information can be digitized and managed across the entire product lifecycle, including planning, development, manufacturing, production preparation, procurement, sales, maintenance, and end-of-life management



## Facial Recognition-based Two-Factor Authentication Systems and Enterprise AI Applications



### AI Products

Providing packaged and custom software utilizing GLORY's facial recognition engine, as well as contract development services for access control systems integrated with facial recognition technology. Rikei also provides advanced AI applications from ailia.



Gesture authentication

## Supporting corporate internet businesses



### "MarkONE Series" of Integrated Internet Marketing Systems

The "MarkOne series" of systems enable the integrated system management that is necessary for marketing using a single management panel. The systems featuring many functions including "MarkONE Membership" for the construction of membership websites, web input-form creation, the totaling of data that has been entered into the system, mass email distribution and a specialized tool for campaign sites.





# NETWORK SOLUTIONS

Providing cutting-edge solutions focused on the transmission and distribution of information for customers in the broadcasting, telecommunications and other industries and local governments.

## Realizing digital transformation



### HPE Aruba Networking Solutions

HPE's "Aruba" provides enterprise networks for the realization of digital transformation and secure, stable and easy to use Wi-Fi environments that are among the best in the industry utilizing added value features such as authentication and positional information features to provide flexible solutions tailored to the scale of the specific installation. "Aruba Remote Access Points (RAPs)" are also available for users working from home or remote offices.



## High-Speed Wireless Connectivity for Diverse Applications



### Long-range Gigabit Wireless Solutions

RADWIN and Ceragon Networks wireless systems leverage advanced 5.6 GHz and millimeter-wave technologies to deliver carrier-grade, gigabit-class connectivity. Designed for high-speed WLANs and long-distance transmission, these solutions also provide seamless migration from legacy 4.9 GHz wireless access systems impacted by frequency reallocation. Ideal applications include video surveillance, high-speed internet access, and mission-critical data communications.



## Reliable Private Wireless Solutions for Healthcare, Manufacturing, and Local Governments



### sXGP Solutions

License-free sXGP solutions from Acenetworks and Ubiik utilizing the 1.9 GHz band to deliver highly reliable wireless connectivity. Supporting high-quality VoLTE voice calls, the solutions provide more stable and interference-resistant communications than Wi-Fi, enabling private wireless network deployment and stable smartphone-based voice communications.



Also supporting bidirectional image and video transmission for IoT infrastructure, the solutions are suitable for remote monitoring applications involving rivers, dams, factory robots, and other environments beyond conventional communication service areas.

## Network devices with a core-to-edge product line featuring high durability and enterprise-friendly management



### Alcatel-Lucent Network Solution

Integrated product lines on a single OS from edge to core, wired/wireless LANs, and security can be managed either on-premises or in the cloud, enabling flexible installation in any environment including in offices, outdoors, and in factories. Simplified networking enables the automation of federated authentication.



## Enabling highly reliable network analysis and optimization



### Network Emulators, Traffic Generators and Packet Capture Solutions

The WAN emulators of Apposite Technologies replicate real-world network conditions, facilitating environment validations that closely simulate actual operations. Traffic generators support the simulation of a wide range of communication patterns and load conditions, enabling comprehensive and multifaceted testing. The packet capture devices of Artiza Networks facilitate highly precise and high-speed traffic recording and analysis. By combining these devices, users are able to build a robust network analysis environment that supports everything from pre-deployment validation to troubleshooting during live operations.



## Reliable network infrastructure for hotels



### Internet Access Gateway Products

The Nomadix "Internet Access Gateway" provides hotels with a reliable, high-speed Internet access solution equipped with advanced network management features such as billing, authentication, bandwidth control, and URL redirection features—all without requiring a complicated setup process. This solution enhances both guest satisfaction and operational efficiency.





NEXT BUSINESS

## Creating New Business Opportunities Through Our Proven Core Businesses

Advancing as a Comprehensive Provider of Space Solutions

### Space Business

- Offer a wide range of products, such as communication devices, satellite components and design tools, through the collaboration of our three core businesses
- Participate in joint projects leveraging our experience in partnerships with overseas manufacturers, as well as our expertise in product implementation and operations.
- Support companies seeking to newly enter the space industry
- Propose effective ways to utilize satellite data and related systems tailored to customers' needs

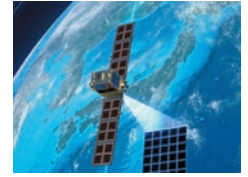


Photo provided by Synspec Inc.

Comprehensive Support for Establishing AI Development Environments

### AI Development Solutions

- Provide workstations, GPUs, and other hardware infrastructure essential for AI development
- Supply sensor systems and testing equipment used in autonomous vehicles and robotics
- Simulate diverse real-world conditions using digital twins to accelerate development
- Support the rapid implementation of AI by integrating developed data and edge devices



Cloud video streaming service for various needs across industries

### Cloud Video Streaming Service

A video streaming service based on the SaaS business model that can be started anytime, easily, and immediately. Providing services ranging from knowledge sharing for internal training and sales materials to paid video distribution services, regardless of industry, size or whether it is live or on-demand. Realizing one-stop solutions for video delivery issues not only by offering video distribution processing but also providing proposals regarding transmission, delivery networks and portal sites, including customizable players.

Comprehensive Support for Satellite Communication Systems

### Satellite Communication Solutions

Satellite communication solutions including satellite modems, frequency converters, power amplifiers, and various antennas, support for equipment selection, system design, integration, and maintenance based on customer requirements

Tracking antennas, onboard equipment, and various modules for the growing low Earth orbit (LEO) satellite market are also provided, in addition to conventional geostationary satellite ground station antennas. Flexible antenna solutions are available through partnerships with satellite antenna manufacturers in Japan and overseas.



Supporting all-IP broadcasting and low-latency delivery mechanisms using the latest technology

### Digital Video Transmission and Distribution Systems

To meet the high-end video and audio processing needs of media companies such as broadcast TV and radio stations, cable TV stations and paid streaming service providers, we provide total systems from codec equipment compatible with the latest standards to players for viewing content, including quality monitoring and optimization. In addition to conventional equipment installed in facilities, we also offer a wide range of services, including software configured on the cloud and pay-as-you-go service provision. We support a wide variety of styles video distribution end to end, from providing only products to supporting the construction of systems that transcend the boundaries between manufacturers.



Helping local governments distribute disaster preparedness information

### Disaster Preparedness Information Distribution Systems

The systems are designed to enable municipal governments to distribute disaster preparedness information using various methods, utilizing long-distance radio communication instead of wired infrastructure that may become disconnected due to an earthquake or tsunamis. Rikei is skilled in analyzing J-Alert telegrams, enabling the distribution of disaster information not only through municipal websites, but also linked SNS accounts on platforms such as X and Facebook.

Reliable technical support

### Support for Sales Engineering, System Design, Installation and Operation

Our field support engineers provide services for system design and proposal, shipping inspections of systems and software, building systems, the procurement installation, sales and maintenance of J-Alert systems and the maintenance of Nomadix "internet access gateways".



Technical & Engineering Center

# ELECTRONIC COMPONENTS & INSTRUMENTS

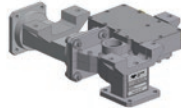
Providing a wide range of electronic instruments and components, and functional materials across diverse industries, from industrial equipment to the automotive, medical, optical communication, optical feeding, national security and aerospace. Our highly specialized products enable us to craft optimal proposals suited to the purpose of use.

## Customizable RF and Microwave Components



### RF Module for Satellite Integration

Teledyne Technologies Incorporated has developed and manufactured RF and microwave components for 45+ years, offering cutting-edge technology to the defense, aerospace, and security markets. Supporting customers facing new technological challenges with the components for modules in the satellite market, which has high reliability and SWaP\* requirements.



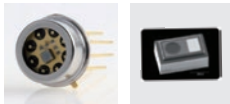
\*SWaP: Size, weight and power. One of the important factors in the design of next-generation satellites.

## A full lineup of emitter and photodetector products, from UV to near-infrared



### Emitters and Photodetectors

Providing many different emitters and photodetectors for different applications, we can design packages including the integration of emitters and photodetectors, as well as propose optical power supply systems suited to the user's purposes.

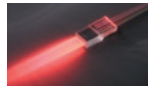


## Optical Device Design & Development for Optical Power Conversion Applications

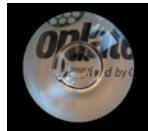


### Optical Fiber & Optical Device Solutions

Contract-based services covering prototyping and small-lot production of quartz glass optical fibers and optical devices in collaboration with Photonic Science & Technology, along with support for optical fiber production equipment.



In-house development of photodetector devices for optical fiber power supply systems and low-power applications.



Optical system design in collaboration with Bevenic of Finland, including optical lenses and thin-film coatings.

## Trusted electronic materials with proven performance



### Functional Materials

Epoxy Technology, which has decades of experience in optical communications, has a proven track record in a wide range of fields, not only in medical and sensing applications. Epoxies specializes in large-volume applications and handles aluminum adhesives for heat sinks and flame-retardant materials. In addition, AOS Thermal Compounds offers non-silicone thermal greases that overcome outgassing challenges and other functional materials that meet customer needs.



## Specialized Solutions for Hazardous Manufacturing Processes & PFAS Treatment



### Chemical Process Manufacturing & PFAS Removal Solutions

Specialized contract manufacturing services for manufacturing processes involving solvents and hazardous substances that require specialized handling and are difficult to manage in-house, covering everything from prototyping to mass production.

PFAS removal solutions using ion exchange resin technologies to efficiently remove both short- and long-chain PFAS while ensuring stable treatment performance and low operating costs.

## High performance electronic components essential for the industrial equipment field



### Electronic Components

We provide LED chips for high-resolution sensor applications, highly reliable resistive and capacitive touch panels for industrial equipment, LDC panel modules, character OLED modules, motherboards, industrial PCs, chip resistors, chip capacitors and ceramic packages.



## Satellite-enabled IoT Modules for Heavy Equipment



### Quake Global IoT/M2M Terrestrial and Satellite Modules

IoT communication modules supporting carrier-certified 3G/LTE and satellite connectivity. Widely adopted by leading global heavy equipment manufacturers, the modules enable data collection from anywhere in the world.



## Power Supplies Requiring High Reliability



### Power Supplies

Offering PULS high-efficiency switched-mode DIN-rail power supplies and RECOM high-efficiency DC/DC and AC/DC converters and switching regulators.



## Industrial PCs for Manufacturing, Medical, and Transportation Applications



### Industrial Embedded PCs & AI Edge Computers

Providing industrial PCs with enhanced durability and heat dissipation performance for factory automation, medical systems, and transportation applications. Also offering secure AI edge computing solutions without cloud connectivity.



## Achieve optimal measurement systems through flexible combination of modules



### Measurement and Analysis Solutions

We provide data acquisition devices and systems, GPIB interfaces, and LabVIEW—the industry-standard software for building measurement systems—all offered by NI, a pioneer in PC-based electronic measurement solutions.

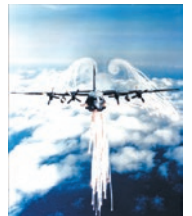


## Playing an active role at the forefront of national security



### Aircraft and Components/Lifesaving Equipment

Our offerings include MD Helicopters, sales and repair of aircraft components, aircraft countermeasure systems (chaff/flares), holographic sights, free-fall training systems, night vision device, a wide range of drones, VR/MR flight simulators, trapped person locators (TPLs), signal lights for air traffic control, and other security-related products.



\*MD Helicopters: helicopters for commercial use from MD Helicopters, Inc.

## Company History

- 1957 Founded Rikei Trading Co., Ltd. in Shiba-Shinbashi (now Nishi-Shinbashi), Tokyo.
- 1964 Delivered DEC's PDP5 minicomputer to the University of Tokyo
- 1968 Opened Osaka Branch.
- 1971 Renamed the company Rikei Corporation.
- 1973 Established Rikei Corporation of America in Cupertino, California, as a subsidiary (liquidated in April 2014).
- 1974 Established Rikei Corporation (H.K.) Ltd. in Hong Kong as a subsidiary (liquidated in March 2024).  
Delivered Scientific Atlanta's satellite tracking system to Showa Station in Antarctica
- 1978 Moved head office to the Shinjuku Nomura Building in Shinjuku, Tokyo.
- 1979 Delivered the first DEC VAX 780 to the National Institute for Basic Biology.
- 1982 Opened Nagoya Sales Office.
- 1986 Opened Sendai Sales Office (currently Tohoku Sales Office).
- 1988 Listed on the Second Section of the Tokyo Stock Exchange.  
Supplied a 34-m radio telescope to the Radio Research Laboratory of the Ministry of Posts and Telecommunications.
- 1990 Opened the Technical & Engineering Center in Makuhari Techno Garden, Chiba.
- 1993 Supplied a digital library system to Nara Institute of Science and Technology.
- 1995 Opened Fukuoka Sales Office (currently Kyushu Sales Office).
- 1997 Supplied a digital broadcasting system to NHK International Broadcasting Station.  
Successfully developed a motorcycle riding simulator jointly with Honda Motor Co., Ltd.
- 2001 Supplied a satellite-based digital image transmission system to a CATV station.  
Supplied a satellite-based data distribution system to a convenience store chain.
- 2002 Supplied a genome analysis computer system to Kazusa DNA Research Institute.  
Certified to ISO 14001.
- 2005 Delivered a high-performance computing server to Kyushu University
- 2007 Delivered J-Alert receivers to 696 local governments
- 2008 Certified to ISO 27001.
- 2010 Certified to ISO 9001.
- 2011 Supplied an automated speaker identification system to the National Research Institute of Police Science.
- 2012 Conducted "field demonstration tests of multi-transmission methods for disaster prevention information" in Koto Ward, Tokyo, jointly with the Fire and Disaster Management Agency (FDMA).
- 2013 Established the North America Liaison Office in Oregon, USA (closed in March 2023).  
Developed and implemented a disaster prevention information management system for the City of Tomigusuku, Okinawa.
- 2014 Delivered a large order of satellite communications antenna systems to a broadcasting satellite company.
- 2015 Opened Okinawa Office.  
Delivered a membership management system for smartphones to a major distributor.
- 2016 Developed and implemented a disaster prevention information management system for the City of Urasoe, Okinawa.  
Delivered a university-wide Wi-Fi system and cloud-based groupware to Mukogawa Women's University.  
Started development and deployment of a hands-on VR drill solution.
- 2017 Selected for the FDMA's Scientific Fire and Disaster Prevention Technology Promotion Program with a field demonstration project using tethered drones for disaster information gathering.  
Acquired shares of AeroPartners Incorporated, making it a subsidiary.  
Acquired shares of NetWell System Corporation, making it a subsidiary.
- 2020 Entered into a business alliance with Ascentek K.K. to promote remote work.
- 2021 Moved head office to Shinjuku Mitsui Building No. 2, Tokyo.  
Opened Nihonbashi Sales Office (closed in September 2024).  
Invested in VFR Inc. through a third-party share allotment.
- 2022 Entered into a strategic business alliance with OEC Co., Ltd.  
Transferred from the Second Section of the Tokyo Stock Exchange to the Standard Market.
- 2023 Opened Chitose-Eniwa Sales Office.  
Invested in AnchorZ Inc. through a third-party share allotment.  
Certified as a "GX Certified Company" under a Ministry of Economy, Trade and Industry program.  
Participated in the "DX League" led by the Ministry of Economy, Trade and Industry.
- 2024 Won the Excellence Award in the "Disaster Prevention and Mitigation and SDGs" category at the 2024 Disaster Prevention and Mitigation and Sustainability Awards.  
Participated in the development project for Indonesia's Disaster Information Processing and Dissemination System (DPIIS).
- 2025 Entered into a strategic business alliance with ELM Inc. to develop and manufacture Japan-made satellite antennas.

## Manufacturers and Partners

### SYSTEM SOLUTIONS

Amazon Web Services, Inc.	Manitoba Hydro International Ltd.
ailia Inc.	Nippon RAD Inc.
BeyondTrust Corporation	NuraLogix Corporation
Eaton Corporation PLC	ORACLE CORPORATION JAPAN
EXGEN NETWORKS Co., Ltd.	Photosynth inc.
GLORY LTD.	PTC Japan K.K.
Hewlett Packard Japan, G.K.	Takazono Corporation
HP Japan Inc.	VARIANTSOFT INC.
IBM Japan, Ltd.	WASAY SOFTWARE TECHNOLOGY INC.
J's Communication Co., Ltd.	XLsoft K.K.
Kiteworks USA, LLC	

### NETWORK SOLUTIONS

Acenetworks Co., Ltd.	HPE Aruba Networking
Advantech Wireless Technologies Inc.	IBEX Technology Co., Ltd.
Alcatel-Lucent Enterprise	KenCast, Inc.
Amagi Media Labs PTE Ltd.	KRATOS Defense & Security Solutions Inc.
Apposite Technologies LLC	MediaKind
Artiza Networks, Inc.	Necfru Inc.
ATEME SA	Novelsat Ltd.
Century Systems Co., Ltd.	Nomadix, Inc.
Ceragon Networks Ltd.	Norsat International Inc.
Communications & Power Industries (CPI)	NOVRA TECHNOLOGIES INC.
Comtech Satellite Network Technologies Corp. (UHP)	PacketLight Networks Ltd.
Comtech Satellite Network Technologies Inc. (EFData, Xicom)	Peak Communications Ltd.
Cross Technologies, Inc.	RADWIN Ltd.
Elber S.r.l.	ST Engineering iDirect, Inc.
ELM Inc.	Synamedia Vividtec Holdings, Inc.
ENENSYS Technologies SA	Teledyne UK Limited.
ETL Systems Ltd.	TestTree
EVC Inc.	Ubiik, Inc.
Fortra, LLC (FileCatalyst)	ViaLite Communications
Gilat Satellite Networks Ltd.	Viking Satcom LLC
Haivision Systems Inc.	XMW Inc.

### ELECTRONIC COMPONENTS & INSTRUMENTS

AOS Thermal Compounds LLC	Mini-Systems, Inc.
Bevenic Group Oy	MTI-Milliren Technologies, Inc.
Daido Steel Co., Ltd.	MUROMACHI CHEMICALS INC.
DMC Co., Ltd.	National Instruments Japan Corporation
Emerging Display Technologies Corp.	Photonic Science Technology Inc.
Ensign Power System, Inc.	PULS GmbH
Epoxy Technology, Inc.	Quake Global, Inc.
Knowles Electronics, LLC.	Quantic MWD (Microwave Dynamics)
Marktech Optoelectronics Inc.	QUEST Microwave Inc.
Micro-Star International Co., Ltd.	RECOM Asia Pte. Ltd.
Micro-Tronics, Inc.	Spacek Labs, Inc.
Mid-Atlantic RF Systems, Inc.	Wainwright Instruments GmbH



Headquarters / Shinjuku Mitsui Building No. 2, 3-2-11 Nishi-Shinjuku, Shinjuku-ku, Tokyo 160-0023

<https://www.rikei.co.jp/>



We are certified to ISO 14001, the international standard for environmental management systems. Company names and product names mentioned herein may be the trademarks or registered trademarks of their respective companies.

Printed in Japan July, 2026