



COMPANY GUIDE

2025/2026



Corporate Philosophy

Rikei Corporation will contribute to society through the enhancement of the quality, speed, and volume of business activities as well as through the pursuit of technological innovation.

Basic Policies of Corporate Management

Rikei Corporation strives to contribute to the development of a highly information-oriented society by supplying solutions meeting the needs of our customers with ideas and advanced technologies well ahead of expected social changes.

Our basic management policies are to contribute to the creation of an enriched society by enhancing our corporate value and enjoying our prosperity together with our shareholders, customers, and employees by way of complying with laws and regulations, making effective use of our management resources, and improving profitability and to proactively promote global environmental conservation activities.

Message from the CEO

The mission of the Rikei Group is to find the most cutting-edge products and systems from around the world and provide them as the optimal solutions to customers' problems through our three core businesses, "System Solutions," "Network Solutions," and "Electronic Components & Instruments," which we have established based on strong relationships with many companies and consistent efforts since our founding.

In this era of rapid digital advancement, where artificial intelligence (AI) and digital transformation (DX) are enhancing operational efficiency and reshaping industries, we are actively exploring new business domains to create added value and expand our contributions to an evolving marketplace, while remaining committed to strengthening and sustaining our three core business foundations.

Furthermore, guided by the Rikei Group's sustainability strategy, we aim to achieve long-term, sustainable growth while contributing to society through our business operations and related initiatives.

We sincerely appreciate your continued support.



Satoru Asaka
President & CEO

Company Profile (as of March 31, 2025)

Established	June 8, 1957
Capital	JPY3,426million
End of Fiscal Year	March
Sales	Non-Consolidated JPY6,552million
	Consolidated JPY18,725million
Employees	Non-Consolidated 138
	Consolidated 174
Main Financing Banks	MUFG Bank (Shinjuku-Shintoshin Branch) Mizuho Bank (Shinjuku-Nishiguchi Branch) Sumitomo Mitsui Banking (Shinjuku-Nishiguchi Branch) Resona Bank (Shintoshin Banking Department) Mitsubishi UFJ Trust and Banking (Head Office)

Executive Officers (as of June 27, 2025)	President & CEO Satoru Isaka
	Managing Director Naoki Furuhashi
	Managing Director Makoto Koyanagi
	Director Koji Furuta
	Director Shoji Hasegawa
	Director Hiroaki Koganemaru
	Director Shinji Yokoyama
	Outside Director Yusuke Date
	Outside Director Akihisa Takizawa
	Outside Director Junko Koshino
	Fulltime Statutory Auditor Yukihiro Yamagishi
	Outside Statutory Auditor Shintaro Furuya
	Outside Statutory Auditor Mizue Sato

Headquarters
Shinjuku Mitsui Building No. 2, 3-2-11
Nishi-Shinjuku, Shinjuku-ku, Tokyo 160-0023
TEL.+81-3-3345-2150 FAX.+81-3-3345-2168

Osaka Branch
INTER ONE TOWER, 1-7-20
Nishi-Tenma, Kita-ku, Osaka 530-0047
TEL.+81-6-6130-8777 FAX.+81-6-6130-8820

Chitose - Eniwa Sales Office
MY Eniwa Building, 56-1
Kiomachi, Eniwa-shi, Hokkaido 061-1444
TEL.+81-123-25-5690 FAX.+81-123-25-5691

Tohoku Sales Office
KURAX SENDAI, 3-3-1 Ichibancho, Aoba-ku,
Sendai-shi, Miyagi 980-0811
TEL.+81-22-209-5019

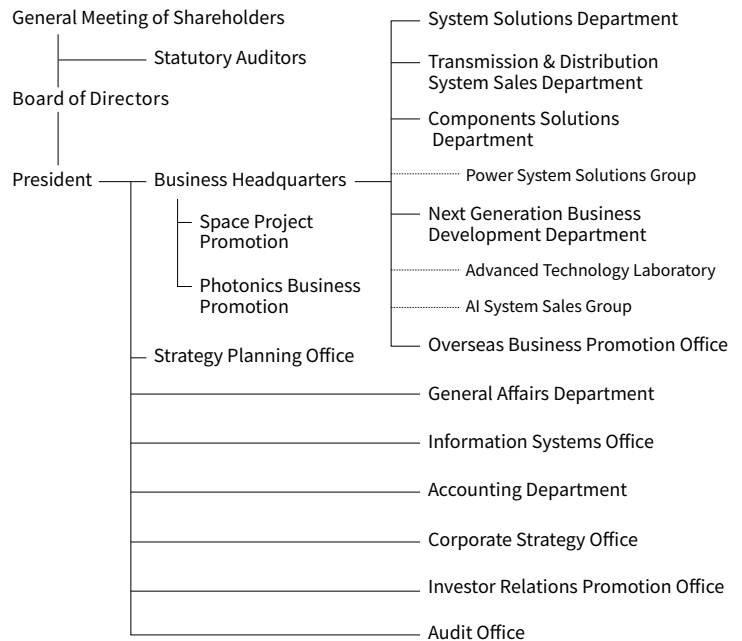
Nagoya Sales Office
No.11 KT Building, 3-17-4
Marunouchi, Naka-ku, Nagoya, Aichi 460-0002
TEL.+81-52-962-3710

Kyushu Sales Office
DaiHakata Building, 2-20-1
Hakataekimae, Hakata-ku, Fukuoka 812-0011
TEL.+81-92-411-8731 FAX.+81-92-411-8744

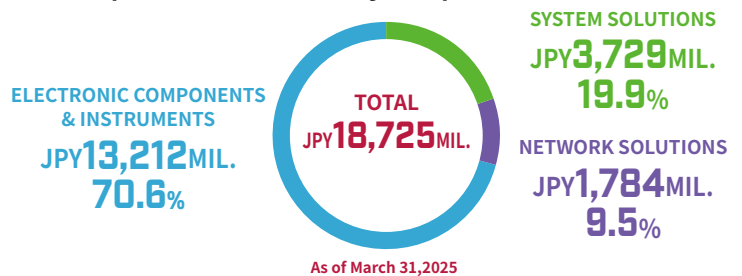
Technical & Engineering Center
Makuhari Techno Garden, B Tower, 1-3
Nakase, Mihama-ku, Chiba 261-8501
TEL.+81-43-274-8431 FAX.+81-43-274-8439

Okinawa Office
Tomari Port Building, 3-25-2
Maejima, Naha, Okinawa, 900-0016
TEL.+81-98-943-2378

Organization Structure (as of April 1, 2025)



Consolidated Sales and Composition Ratio by Department



Subsidiaries

AeroPartners Incorporated

Established	July 1992
Capital	JPY80million
Executive Officers	President Makoto Koyanagi Director Tamami Nakahara Director Shinji Yokoyama Statutory Auditor Shoji Hasegawa
Address	Shinjuku Mitsui Building No. 2, 3-2-11 Nishi-Shinjuku, Shinjuku-ku, Tokyo 160-0023 TEL.+81-3-3340-6101 FAX.+81-3-3340-6105 URL http://www.aeropartners.co.jp/en/index.html
Field of Business	Sale and leasing of aircraft and aircraft parts and customer support

NetWell System Corporation

Established	September 2008
Capital	JPY15million
Executive Officers	President & CEO Akimi Tomita Director Koji Furuta Director Takeo Kikuchi
Address	Shinjuku Mitsui Building No. 2, 3-2-11 Nishi-Shinjuku, Shinjuku-ku, Tokyo 160-0023 TEL.+81-3-3345-2180 FAX.+81-3-3345-2172
Field of Business	System development

SYSTEM SOLUTIONS

Providing solutions with IT infrastructure, including information security, CAD, and solutions in new fields of business such as AI, IoT, and VR/AR, to private companies, universities, government offices, and research institutions as comprehensive systems that meet the needs of customers.

Flexible and agile IT infrastructure

Hewlett Packard Enterprise (HPE) Solutions

An extensive lineup of HPE products is available to support any type of workload. We also offer a wide scope of solutions, including hyper-converged virtual infrastructure, high performance Aruba networks suitable for the implementation of security measures and IoT systems.



HP's personal computing and printing solutions that create new value

HP Japan Products

The provision of PCs for corporations installed with comprehensive and unique security solutions developed through advanced research and development efforts, and printing solutions leveraging advanced industry-leading technologies.



Centralized implementation and management of the operations of educational institutions

"CampusMagic" Entrance Exam and Curriculum System

"CampusMagic" is an intuitive and easy-to-operate system that helps educational institutions manage entrance examinations, employment, attendance and other operations. Using this system, data such as student attendance, courses, and test scores can be centrally managed at low cost. The standard system comes equipped with a score analysis tool and web portal feature and it fulfills a wide range of needs of educational institutions.



Enhancing security and control for confidential data sharing

"Kiteworks" Secure File Collaboration System

"Kiteworks" provides on-premises solutions that enable confidential data to be securely shared with external users.



Digital twin technology supporting design, verification and AI development

Development Using Digital Twins in Manufacturing Industries

Our solution supports development using NVIDIA Omniverse™ and Unreal Engine. It leverages high-fidelity digital twin environments to enable a wide range of manufacturing applications, including design evaluation, verification, and AI training.



PHR* healthcare products using transcutaneous optical technology

Non-contact Vital-Sign Measurement Solution

Providing non-contact vital measurement solutions to measure vital signs such as heart rate and analyze these vital signs using AI, as well as remote diagnosis models and smart mirror devices using these technologies.

*PHR: Personal health records. Information about a person's health, medical care and nursing care.



Facial recognition technology to minimize on-site work and prevent medication errors when providing nursing care

"Medi-Assi" Application for Preventing Medication Errors

"Medi-Assi" is a cloud SaaS solution to prevent medication errors and support the administration of medication in care facilities. On-site work and time is minimized using facial recognition technology to prevent careless medication errors.



Comprehensive provision of IBM solutions

IBM Solutions

Products supporting IT infrastructure are provided primarily through software. LTO tape systems for the video libraries used by broadcast stations are also provided.



Made in Japan IDaaS

"Extic" Cloud Authentication Solution

"Extic" is a made in Japan cloud ID management platform that enables ID federation both in the cloud and on premises, featuring single sign-on and federated authentication using GakuNin.*



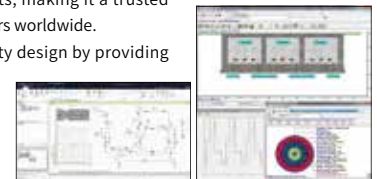
*GakuNin: The Academic Access Management Federation in Japan. Its members include universities, educational institutions, publishers, etc. that use and provide academic resources electronically.

Globally recognized simulation software for the analysis, design, and verification of power systems and equipment

"PSCAD V5" Software for Power Systems EMT Simulations, "CYMCAP" Software for Calculating Cable Ampacity

"PSCAD V5" is a leading EMT-based power system analysis software that features an intuitive graphical user interface (GUI) for studying a wide range of phenomena in power systems. It allows users to model complex networks, run detailed simulations, and generate highly accurate results, making it a trusted tool among engineers and researchers worldwide.

"CYMCAP" supports electrical facility design by providing reliable cable ampacity calculations through its extensive lineup of modules.



PSCAD V5

CYMCAP



Expandability and excellent operability

"Creo" 3D CAD Software, "Windchill" Product Lifecycle Management (PLM) System, and the "Vuforia Studio" AR Platform

"Creo" is a comprehensive 3D CAD/CAM/CAE solution that supports the entire product development process from design to the analysis of mechanisms, heat conduction, and structural stress. "Windchill" is a PLM system that enables effective management of enterprise data, bills of materials (BOMs), documents, workflows, engineering changes, and collaboration. By integrating "Creo" with the AR platform "Vuforia Studio," users can create AR content directly within Creo and easily generate work instructions with 3D CAD data and animations.



Two-factor authentication, visual inspection and facial recognition products using AI technology

AI Products

Providing a contracted development service using packaged and customized software using AI engines from Mindhive and ax, as well as facial authentication engines from GLORY. Rikei has also released products that make it easier to increase work efficiency by using its original AI technology, including intracompany information searching tools using ChatGPT's standard features.



Gesture authentication



Supporting corporate internet businesses

"MarkONE Series" of Integrated Internet Marketing Systems

The "MarkOne series" of systems enable the integrated system management that is necessary for marketing using a single management panel. The systems featuring many functions including "MarkONE Membership" for the construction of membership websites, web input-form creation, the totaling of data that has been entered into the system, mass email distribution and a specialized tool for campaign sites.





NETWORK SOLUTIONS

Providing cutting-edge solutions focused on the transmission and distribution of information for customers in the broadcasting, telecommunications and other industries and local governments.

Realizing digital transformation



HPE Aruba Networking Solutions

HPE's "Aruba" provides enterprise networks for the realization of digital transformation and secure, stable and easy to use Wi-Fi environments that are among the best in the industry utilizing added value features such as authentication and positional information features to provide flexible solutions tailored to the scale of the specific installation. "Aruba Remote Access Points (RAPs)" are also available for users working from home or remote offices.



Network devices with a core-to-edge product line featuring high durability and enterprise-friendly management



Alcatel-Lucent Network Solution

Integrated product lines on a single OS from edge to core, wired/wireless LANs, and security can be managed either on-premises or in the cloud, enabling flexible installation in any environment including in offices, outdoors, and in factories. Simplified networking enables the automation of federated authentication.



Scalable wireless solutions for a wide range of applications



Long-range Gigabit Wireless Access Equipment

Millimeter-wave wireless devices from RADWIN and Ceragon Networks utilize advanced technology to deliver gigabit-class connectivity. These systems are ideal for high-bandwidth applications such as high-speed wireless LANs and long-distance data transmission. They are optimized for surveillance video streaming, high-speed internet access and reliable data communication.

The license-free sXGP solution from Acenetworks supports high-quality VoLTE voice calls. Compared to Wi-Fi, it offers a more stable and interference-free communication environment, enabling reliable voice communication using smartphones. The solution also supports the two-way transmission of still and video images using IoT devices, making it ideal for private communications in areas without existing network infrastructure. Supporting a wide range of field applications, it is well suited for the remote monitoring of rivers, dams and disaster prevention or mitigation sites.



Enabling highly reliable network analysis and optimization



Network Emulators, Traffic Generators and Packet Capture Solutions

The WAN emulators of Apposite Technologies replicate real-world network conditions, facilitating environment validations that closely simulate actual operations. Traffic generators support the simulation of a wide range of communication patterns and load conditions, enabling comprehensive and multifaceted testing. The packet capture devices of Artiza Networks facilitate highly precise and high-speed traffic recording and analysis. By combining these devices, users are able to build a robust network analysis environment that supports everything from pre-deployment validation to troubleshooting during live operations.



Reliable network infrastructure for hotels



Internet Access Gateway Products

The Nomadix "Internet Access Gateway" provides hotels with a reliable, high-speed Internet access solution equipped with advanced network management features such as billing, authentication, bandwidth control, and URL redirection features—all without requiring a complicated setup process. This solution enhances both guest satisfaction and operational efficiency.





NEW TOPICS

Entering New Business Domains Leveraging Our Proven Strengths

Advancing as a Comprehensive Provider of Space Solutions



Space Business

- Offer a wide range of products, such as communication devices, satellite components and design tools, through the collaboration of our three core businesses
- Participate in joint projects leveraging our experience in partnerships with overseas manufacturers, as well as our expertise in product implementation and operations.
- Support companies seeking to newly enter the space industry
- Propose effective ways to utilize satellite data and related systems tailored to customers' needs

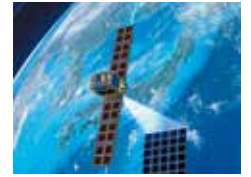


Photo provided by Synspec Inc.

Comprehensive Support for Establishing AI Development Environments



AI Development Solutions

- Provide workstations, GPUs, and other hardware infrastructure essential for AI development
- Supply sensor systems and testing equipment used in autonomous vehicles and robotics
- Deliver high-security, low-latency and high-bandwidth communication environments
- Simulate diverse real-world conditions using digital twins to accelerate development
- Support the rapid implementation of AI by integrating developed data and edge devices



Cloud video streaming service for various needs across industries



Cloud Video Streaming Service

A video streaming service based on the SaaS business model that can be started anytime, easily, and immediately. Providing services ranging from knowledge sharing for internal training and sales materials to paid video distribution services, regardless of industry, size or whether it is live or on-demand. Realizing one-stop solutions for video delivery issues not only by offering video distribution processing but also providing proposals regarding transmission, delivery networks and portal sites, including customizable players.

Reliable network infrastructure for hotels



RF Module for Satellite Integration

Teledyne Technologies Incorporated has developed and manufactured RF and microwave components for 45+ years, offering cutting-edge technology to the defense, aerospace, and security markets. Supporting customers facing new technological challenges with the components for modules in the satellite market, which has high reliability and SWaP* requirements.



*SWaP: Size, weight and power. One of the important factors in the design of next-generation satellites.

Providing total support for satellite communications



Satellite Communications Products

Providing satellite communications products from western countries including satellite modems, frequency converters, power amplifiers and various antennas, as well as services for selecting equipment and designing and building systems according to the user's application. Additionally, building and providing devices to be installed in satellites, modules, and X/Y tracking antennas for communications in the field of low earth orbit satellites, an area that is drawing attention as a new space business.



Comtech ELEVATE

Supporting all-IP broadcasting and low-latency delivery mechanisms using the latest technology



Digital Video Transmission and Distribution Systems

To meet the high-end video and audio processing needs of media companies such as broadcast TV and radio stations, cable TV stations and paid streaming service providers, we provide total systems from codec equipment compatible with the latest standards to players for viewing content, including quality monitoring and optimization. In addition to conventional equipment installed in facilities, we also offer a wide range of services, including software configured on the cloud and pay-as-you-go service provision. We support a wide variety of styles video distribution end to end, from providing only products to supporting the construction of systems that transcend the boundaries between manufacturers.



Helping local governments distribute disaster preparedness information



Disaster Preparedness Information Distribution Systems

The systems are designed to enable municipal governments to distribute disaster preparedness information using various methods, utilizing long-distance radio communication instead of wired infrastructure that may become disconnected due to an earthquake or tsunamis. Rikei is skilled in analyzing J-Alert telegrams, enabling the distribution of disaster information not only through municipal websites, but also linked SNS accounts on platforms such as X (formerly Twitter) and Facebook.

Reliable technical support



Support for Sales Engineering, System Design, Installation and Operation

Our field support engineers provide services for system design and proposal, shipping inspections of systems and software, building systems, the procurement installation, sales and maintenance of J-Alert systems and the maintenance of Nomadix "internet access gateways".



Technical & Engineering Center

ELECTRONIC COMPONENTS & INSTRUMENTS


Providing a wide range of electronic instruments and components, and functional materials across diverse industries, from industrial equipment to the automotive, medical, optical communication, optical feeding, national security and aerospace. Our highly specialized products enable us to craft optimal proposals suited to the purpose of use.

IoT module which has been used in many types of heavy machinery to enable satellite communication 

Quake Global's IoT/M2M Terrestrial and Satellite-compatible Module

With 3G/LTE communications certified as compliant with domestic Japanese carrier technical standards and IoT communications modules that support satellite communications, we provide connectivity from locations outside terrestrial signal coverage. The IoT communications module is used by 13 of the world's top 20 heavy equipment manufacturers and it is able to collect data from anywhere in the world.



High performance electronic components essential for the industrial equipment field 

Electronic Components

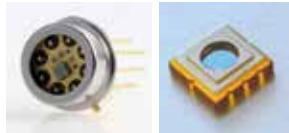
We provide LED chips for high-resolution sensor applications, highly reliable resistive and capacitive touch panels for industrial equipment, LDC panel modules, character OLED modules, motherboards, industrial PCs, chip resistors, chip capacitors and ceramic packages.



A full lineup of emitter and photodetector products, from UV to near-infrared 

Emitters and Photodetectors

Providing many different emitters and photodetectors for different applications, we can design packages including the integration of emitters and photodetectors, as well as propose optical power supply systems suited to the user's purposes.



Power Supplies Requiring High Reliability 

Power Supplies

Offering PULS high-efficiency switched-mode DIN-rail power supplies and RECOM high-efficiency DC/DC and AC/DC converters and switching regulators.



Proposing one-stop services from design to the development of custom fibers and optical devices. 

Optical Fibers and Optical Fiber related Products

We offer contract-based services ranging from prototyping to small-lot production of single- and multi-mode optical fibers, in collaboration with Photonic Science & Technology Inc. We also provide design and manufacturing services for optical fiber production equipment. As part of our in-house initiatives, Rikei collaborates with universities to conduct simulation testing for the development of optical fiber power supply systems aimed at infrastructure maintenance. Through our partnership with Bevenic in Finland, Rikei also supports full-scale production of coated optical fibers and offers optical system design services, including optical lenses, thin-film coatings.



Industrial PCs for manufacturing and medical equipment and installation in vehicles 

Electronic Devices

Providing PCs with enhanced robustness and heat dissipation measures as industrial equipment for factory automation, medical systems and transportation systems.




Achieve optimal measurement systems through flexible combination of modules 

Measurement and Analysis Solutions

We provide data acquisition devices and systems, GPIB interfaces, and LabVIEW—the industry-standard software for building measurement systems—all offered by NI, a pioneer in PC-based electronic measurement solutions.



Trusted electronic materials with proven performance 

Functional Materials

Epoxy Technology, which has decades of experience in optical communications, has a proven track record in a wide range of fields, not only in medical and sensing applications. Epoxies specializes in large-volume applications and handles aluminum adhesives for heat sinks and flame-retardant materials. In addition, AOS Thermal Compounds offers non-silicone thermal greases that overcome outgassing challenges and other functional materials that meet customer needs.



Playing an active role at the forefront of national security 

Aircraft and Components/Lifesaving Equipment

Our offerings include MD Helicopters, sales and repair of aircraft components, aircraft countermeasure systems (chaff/flares), holographic sights, free-fall training systems, night vision device, a wide range of drones, VR/MR flight simulators, trapped person locators (TPLs), signal lights for air traffic control, and other security-related products.



*MD Helicopters: helicopters for commercial use from MD Helicopters, Inc.

Company History

- 1957 Rikei Trading Co., Ltd. founded in Shiba-Shimbashi (present Nishi-Shimbashi), Minato-ku, Tokyo
- 1964 Delivered DEC's PDP5 minicomputer to the University of Tokyo
- 1968 Osaka Branch opened
- 1971 Company's name changed to Rikei Corporation
- 1973 Rikei Corporation of America established in Cupertino, California, USA as a locally incorporated company (Liquidated in April 2014)
- 1974 Rikei Corporation (H.K.) Ltd. established in Hong Kong as a locally incorporated company (Liquidated in March 2024)
Delivered Scientific Atlanta's satellite tracking system to Showa Station in Antarctica
- 1978 Head office moved to the Shinjuku Nomura Building in Nishi-Shinjuku, Shinjuku-ku, Tokyo
- 1979 Delivered the first DEC VAX780 to the National Institute for Basic Biology
- 1982 Nagoya Sales Office opened
- 1986 Sendai Sales Office opened (presently Tohoku Sales Office)
- 1988 Listed on the Second Section of Tokyo Stock Exchange
Delivered a 34-m radio telescope to Radio Research Laboratory
- 1990 Technical & Engineering Center opened in Makuhari Techno Garden, Nakase, Mihama-ku, Chiba
- 1993 Delivered a digital library system to Nara Institute of Science and Technology
- 1995 Fukuoka Sales Office opened (presently Kyushu Sales Office)
- 1997 Delivered a digital broadcasting system to NHK International Broadcasting Station
Successfully developed a riding simulator for motor-bicycles jointly with Honda Motor Co., Ltd.,
- 2001 Delivered a satellite-based digital image transmission system to a CATV station
Delivered a satellite-based data distribution system to a convenience store chain
- 2002 Delivered a genome analysis computer system to Kazusa DNA Research Institute
Enterprise-wide Environmental Management System certified (ISO 14001)
- 2005 Delivered a high-performance computing server to Kyushu University
- 2007 Delivered J-Alert receivers to 696 local governments
- 2008 Information Security Management System certified (ISO 27001)
- 2010 Quality Management System certified (ISO 9001)
- 2011 Delivered an automatic voice recognition system to the National Research Institute of Police Science
- 2012 Conducted "field demonstration tests of multi-transmission methods for disaster prevention information" in Koto Ward in Tokyo in cooperation with the Fire and Disaster Management Agency (FDMA).
- 2013 The North America liaison office established in Bend, Oregon, USA (Closed in March 2023)
Designed and delivered a disaster prevention information management system to the City of Tomigusuku, Okinawa
- 2014 Delivered a large order of satellite communications antenna systems to a broadcasting satellite company
- 2015 Okinawa Office opened
Delivered a membership management system for smartphones to a major distributor
- 2016 Designed and delivered a disaster prevention information management system to the City of Urasoe, Okinawa
Delivered a university-wide Wi-Fi system and cloud-based groupware for educational institutions to Mukogawa Women's University
Started to develop and provide a hands-on VR drill solution
- 2017 "Field demonstration tests utilizing tethered drones aimed at gathering information under disaster conditions program selected to be a part of the FDMA's" Scientific Fire and Disaster Prevention Technology Promotion Program
Acquired shares of AeroPartners Incorporated (subsidiary acquisition)
Acquired shares of NetWell System Corporation (subsidiary acquisition)
- 2020 Entered into a business alliance with Ascenstek K.K. to build a foundation for promoting remote work
- 2021 Head office moved to Shinjuku Mitsui Building No. 2 in Nishi-Shinjuku, Shinjuku-ku, Tokyo
Nihonbashi Sales Office opened (Closed in September 2024)
Underwrote a third-party allotment of shares of VFR Inc.
- 2022 Signed a strategic business alliance agreement with OEC Co. Ltd.
Moved from the Second Section of the Tokyo Stock Exchange to the Standard Market
- 2023 Chitose-Eniwa Sales Office opened
Underwrote a third-party allotment of shares of AnchorZ Inc.
Became a "GX Certified Company" under a Ministry of Economy, Trade and Industry program
Participated in the "DX League" led by the Ministry of Economy, Trade and Industry
- 2024 Won the Excellence Award in the the Disaster Prevention and Mitigation and the SDGs category of the 2024 Disaster Prevention and Mitigation and Sustainability Awards
Participated in the Development Project for Indonesia's Disaster Information Processing and Dissemination System (DPIIS)

Manufacturers and Partners

SYSTEM SOLUTIONS

Amazon Web Services, Inc.	Meta Platforms, Inc.
ax Inc.	Mindhive Ltd.
BeyondTrust Corporation	Nippon RAD Inc.
Eaton Corporation PLC	Nuralogix Corporation
EXGEN NETWORKS Co., Ltd	ORACLE CORPORATION JAPAN
GLORY LTD.	Photosynth Inc.
Hewlett Packard Japan, G.K.	PTC Japan K.K.
HP Japan Inc.	Takazono Corporation
IBM Japan, Ltd.	VARIANTSOFT INC.
J's Communication Co., Ltd.	WASAY SOFTWARE TECHNOLOGY INC.
Kiteworks USA, LLC	XLsoft K.K.
Manitoba Hydro International Ltd.	

NETWORK SOLUTIONS

Acenetworks Co.,Ltd	HPE Aruba Networking
Advantech Wireless Technologies Inc.	IBEX Technology Co.,Ltd.
Alcatel-Lucent Enterprise	KenCast, Inc.
Amagi Media Labs PTE Ltd.	KRATOS Defense & Security Solutions Inc.
Apposite Technologies	MediaKind
Artiza Networks, Inc.	Necfru Inc.
ATEME SA	Novelsat Ltd.
Century Systems Co., Ltd.	Nomadix, Inc.
Ceragon Networks Ltd.	Norsat International Inc.
Communications & Power Industries (CPI)	NOVRA TECHNOLOGIES INC.
Comtech Satellite Network Technologies Corp. (UHP)	PacketLight Networks Ltd.
Comtech Satellite Network Technologies Inc. (EFData, Xicom)	Peak Communications Ltd.
Cross Technologies, Inc.	RADWIN Ltd.
Elber S.r.l.	ST Engineering iDirect, Inc.
ENENSYS Technologies, S.A.	Synamedia Vividtec Holdings, Inc.
ETL Systems Ltd.	Teledyne UK Limited.
EVC Inc.	TestTree
Fortra, LLC (FileCatalyst)	Ubiik, Inc.
Gilat Satellite Networks Ltd.	ViaLite Communications
Haivision Systems Inc.	Viking Satcom
	XMW Inc.

ELECTRONIC COMPONENTS & INSTRUMENTS

AOS Thermal Compounds LLC	Mini-Systems, Inc.
Bevenic Group Oy	MTI-MILLIREN TECHNOLOGIES, INC.
Daido Steel Co., Ltd.	MUROMACHI CHEMICALS INC.
DMC Co., Ltd.	National Instruments Japan Corporation
Emerging Display Technologies Corp.	Photonic Science Technology Inc.
Ensign Power Systems, Inc.	PULS GmbH
Epoxy Technology, Inc.	Quake Global, Inc.
Knowles Electronics, LLC.	Quantic MWD (Microwave Dynamics)
Marktech Optoelectronics Corporation	QUEST Microwave Inc.
Micro-Star International Co., Ltd.	RECOM Asia Pte. Ltd.
Micro-Tronics	SPACEK LABS, INC.
Mid-Atlantic RF Systems, Inc.	Wainwright Instruments GmbH



Headquarters / Shinjuku Mitsui Building No. 2, 3-2-11 Nishi-Shinjuku, Shinjuku-ku, Tokyo 160-0023

<https://www.rikei.co.jp/>



We are certified to ISO 14001, the international standard for environmental management systems. Company names and product names mentioned herein may be the trademarks or registered trademarks of their respective companies.